

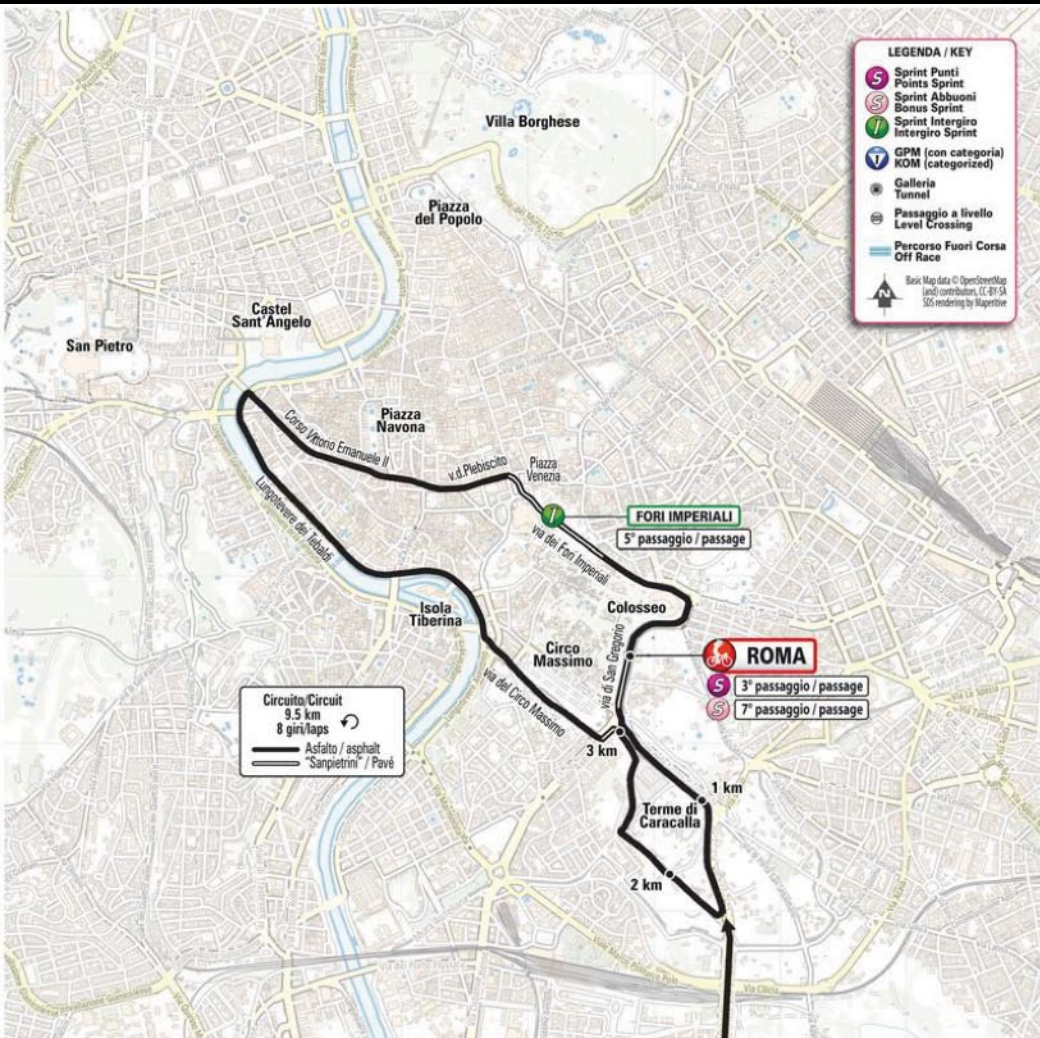


**GIRO D'ITALIA 107**

**GRANDE ARRIVO ROMA**

**HOSPITALITY LOUNGE**

#giroitalia



Sunday, MAY 26 2024

STAGE 21

ROMA > ROMA

Start Village > Quadrato della Concordia, ROMA

Finish Line > via di San Gregorio, ROMA

Race Starting Time > 3.30 pm

End of the Stage > ~ 6:45 pm

# FINISH LINE ACTIVITIES

**11:25 am** > Family Ride Start

**12:30 pm** > Family Ride Finish

**12:45 pm** > Cycling Cup Start

**1:20 pm** > Cycling Cup Finish

**1.50 pm** > 1° passage of the Giro E

**2.45 pm** > 1° passage of the Caravan

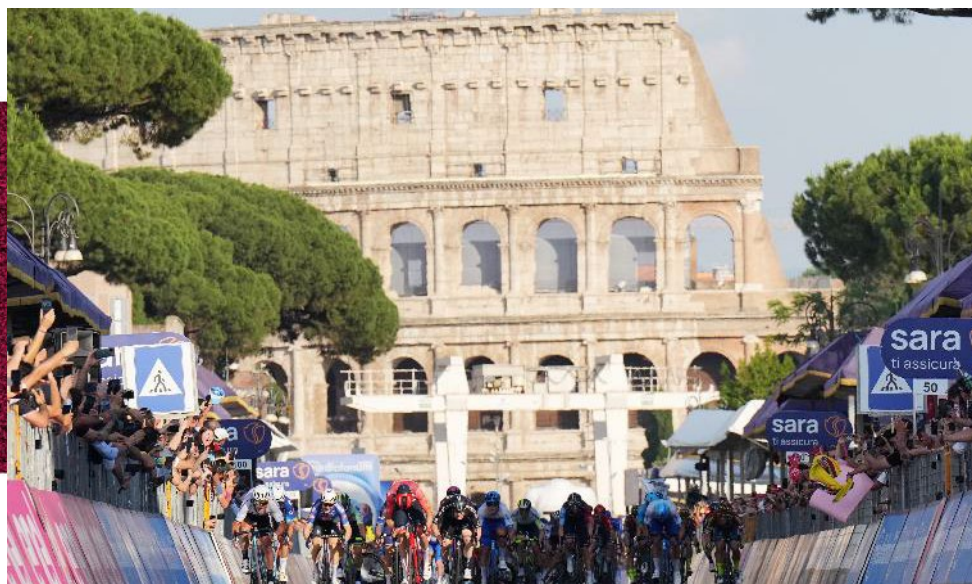
**3.05 pm** > Arrival Giro E

**3.27 pm** > Caravan arrives, activity

**3.50 pm** > Carovan leaves

**4.50/5.00 pm** > 1° Passage Giro d'Italia

**~ 6:45 pm** > End of the Stage & Awards Ceremony



GIRO D'ITALIA AMORE INFINITO  
GIRO D'ITALIA AMORE INFINITO  
GIRO D'ITALIA AMORE INFINITO  
GIRO D'ITALIA AMORE INFINITO  
GIRO D'ITALIA AMORE INFINITO  
GIRO D'ITALIA AMORE INFINITO

# TIMETABLE

Roma > Roma - 125 km

- **Opening Lounge Hospitality** > 2:30 p.m.
- **Closing Lounge Hospitality** > after the ceremony awards
- **Race viewing with 9 passages of the race, one every ~ 20 minutes**
- **Location Lounge** > [via di San Gregorio](#)

Tappa  
**21**  
cronotabella

**ROMA - ROMA**

km 125

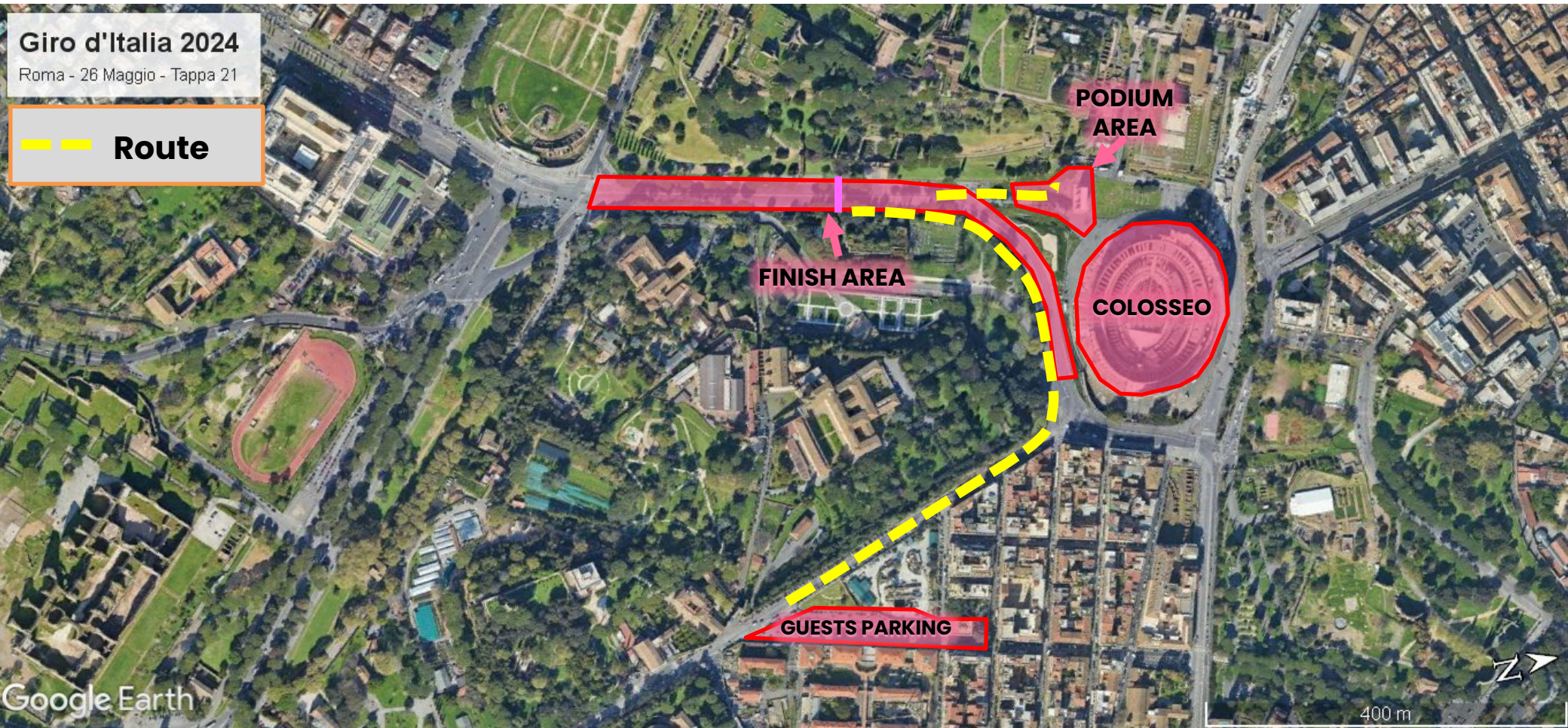
domenica 26 maggio 2024

D = 300 m

	Località	Note	DISTANZE			ORA DI PASSAGGIO		
			par- ziali	per- corse	da per- correre	media km/ora		
						42	40	38
PROVINCIA DI ROMA						>>>>>		
	20 ROMA	↑ Villaggio di Partenza	2.5			15.30	15.30	15.30
	32 ROMA	↑ km 0	0.0	0.0	125.0	15.35	15.35	15.35
	23 Svincolo per Ostia/Aurelia	↑ v.C.Colombo	0.7	0.7	124.3	15.36	15.36	15.36
	12 Casal Palocco	↑ v.C.Colombo	11.5	12.2	112.8	15.52	15.53	15.54
	5 Fontana dello Zodiaco	↔ sp.601	4.8	17.0	108.0	15.59	16.00	16.01
	4 Ostia	⊖ sp.601	2.9	19.9	105.1	16.03	16.04	16.06
	5 Fontana dello Zodiaco	↔ via Cristoforo Colombo	3.0	22.9	102.1	16.08	16.09	16.11
	12 Casal Palocco	↑ v.C.Colombo	4.9	27.8	97.2	16.16	16.18	16.20
	20 Uscita per EUR	↑ v.C.Colombo	11.1	38.9	86.1	16.34	16.37	16.40
	32 EUR	↑ v.C.Colombo	2.9	41.8	83.2	16.38	16.42	16.45
	38 Porta Ardeatina	↑ Largo Terme di Caracalla	5.4	47.2	77.8	16.47	16.51	16.55
	22 viale delle Terme di Caracalla	↑	0.8	48.0	77.0	16.48	16.52	16.56
	21 ROMA	↑ 1° passaggio	1.0	49.0	76.0	16.49	16.53	16.58
	22 Colosseo	↑ v.d.Fori Imperiali	0.7	49.7	75.3	16.51	16.55	16.59
	21 Fori Imperiali	↑ P.Venezia	0.7	50.4	74.6	16.52	16.56	17.00
	19 Piazza Venezia	↔ v.d.Plebiscito	0.4	50.8	74.2	16.52	16.56	17.01
	19 Piazza Pasquale Paoli	↔ Lungotevere dei Fiorentini	1.6	52.4	72.6	16.54	16.59	17.03
	22 Lungotevere Aventino	↔ v.d.Greca-v.d.Circo Massimo	2.1	54.5	70.5	16.58	17.02	17.07
	21 viale Guido Baccelli	↔ v.le Giotto	1.0	55.5	69.5	16.59	17.03	17.08
	14 viale delle Terme di Caracalla	↑	1.9	57.4	67.6	17.01	17.06	17.11
	21 ROMA	↑ 1° giro	1.1	58.5	66.5	17.03	17.08	17.13
	21 Fori Imperiali	↔ P.Venezia	1.4	59.9	65.1	17.05	17.10	17.15
	22 Lungotevere Aventino	↔ v.d.Greca-v.d.Circo Massimo	4.0	63.9	61.1	17.11	17.16	17.22
	21 ROMA	↑ 2° giro	4.1	68.0	57.0	17.17	17.22	17.28
	21 Fori Imperiali	↔ P.Venezia	1.4	69.4	55.6	17.18	17.24	17.30
	22 Lungotevere Aventino	↔ v.d.Greca-v.d.Circo Massimo	4.0	73.4	51.6	17.25	17.30	17.37
	21 ROMA	↑ 3° giro	4.1	77.5	47.5	17.30	17.36	17.43
	21 Fori Imperiali	↔ P.Venezia	1.4	78.9	46.1	17.32	17.38	17.45
	22 Lungotevere Aventino	↔ v.d.Greca-v.d.Circo Massimo	4.0	82.9	42.1	17.38	17.44	17.51
	21 ROMA	↑ 4° giro	4.1	87.0	38.0	17.43	17.50	17.57
	21 Fori Imperiali	↔ P.Venezia	1.4	88.4	36.6	17.45	17.52	17.59
	22 Lungotevere Aventino	↔ v.d.Greca-v.d.Circo Massimo	4.0	92.4	32.6	17.51	17.58	18.06
	21 ROMA	↑ 5° giro	4.1	96.5	28.5	17.56	18.04	18.12
	21 Fori Imperiali	↔ P.Venezia	1.4	97.9	27.1	17.58	18.05	18.14
	22 Lungotevere Aventino	↔ v.d.Greca-v.d.Circo Massimo	4.0	101.9	23.1	18.04	18.12	18.20
	21 ROMA	↑ 6° giro	4.1	106.0	19.0	18.09	18.17	18.26
	21 Fori Imperiali	↔ P.Venezia	1.4	107.4	17.6	18.11	18.19	18.28
	22 Lungotevere Aventino	↔ v.d.Greca-v.d.Circo Massimo	4.0	111.4	13.6	18.16	18.25	18.34
	21 ROMA	↑ 7° giro	4.1	115.5	9.5	18.21	18.30	18.39
	21 Fori Imperiali	↔ P.Venezia	1.4	116.9	8.1	18.23	18.32	18.41
	22 Lungotevere Aventino	↔ v.d.Greca-v.d.Circo Massimo	4.0	120.9	4.1	18.29	18.37	18.47
	21 ROMA	↑ via di San Gregorio	4.1	125.0	0.0	18.33	18.43	18.52

# FINISH LINE AREA

Via di San Gregorio



# GUESTS PARKING (only with vehicles stickers)

Piazza Celimontana

Giro d'Italia 2024

Roma - 26 Maggio - Tappa 21



LOCATION



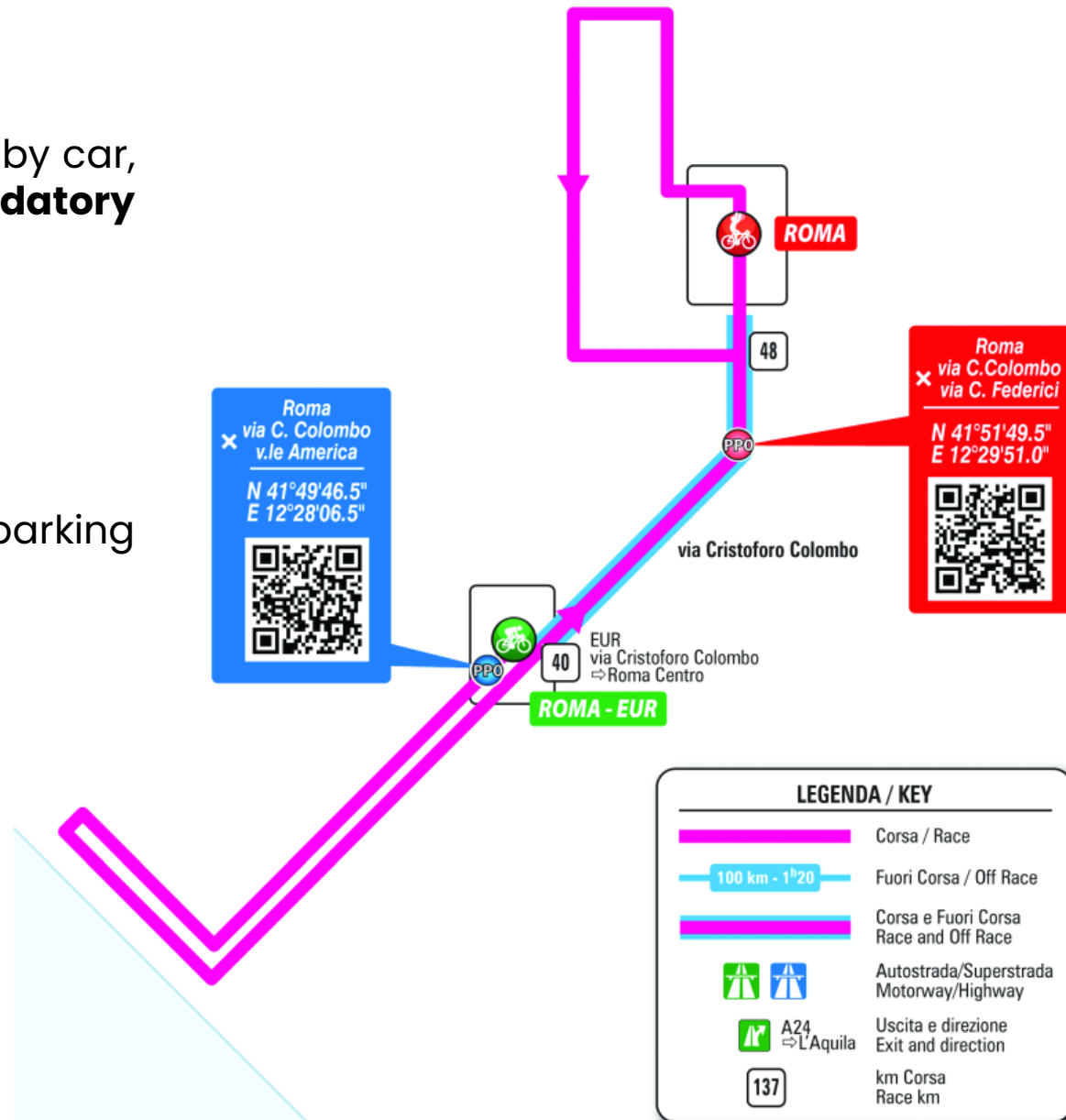
Once parked, to reach the Arrival Hospitality area, follow the appropriate signs.

# MANDATORY PASSING POINT

To reach the START & FINISH LINE areas by car, you have to go to the PPO (**Mandatory Passing Point**):

- **START**
- **FINISH LINE**

And follow the signs to reach the parking areas.



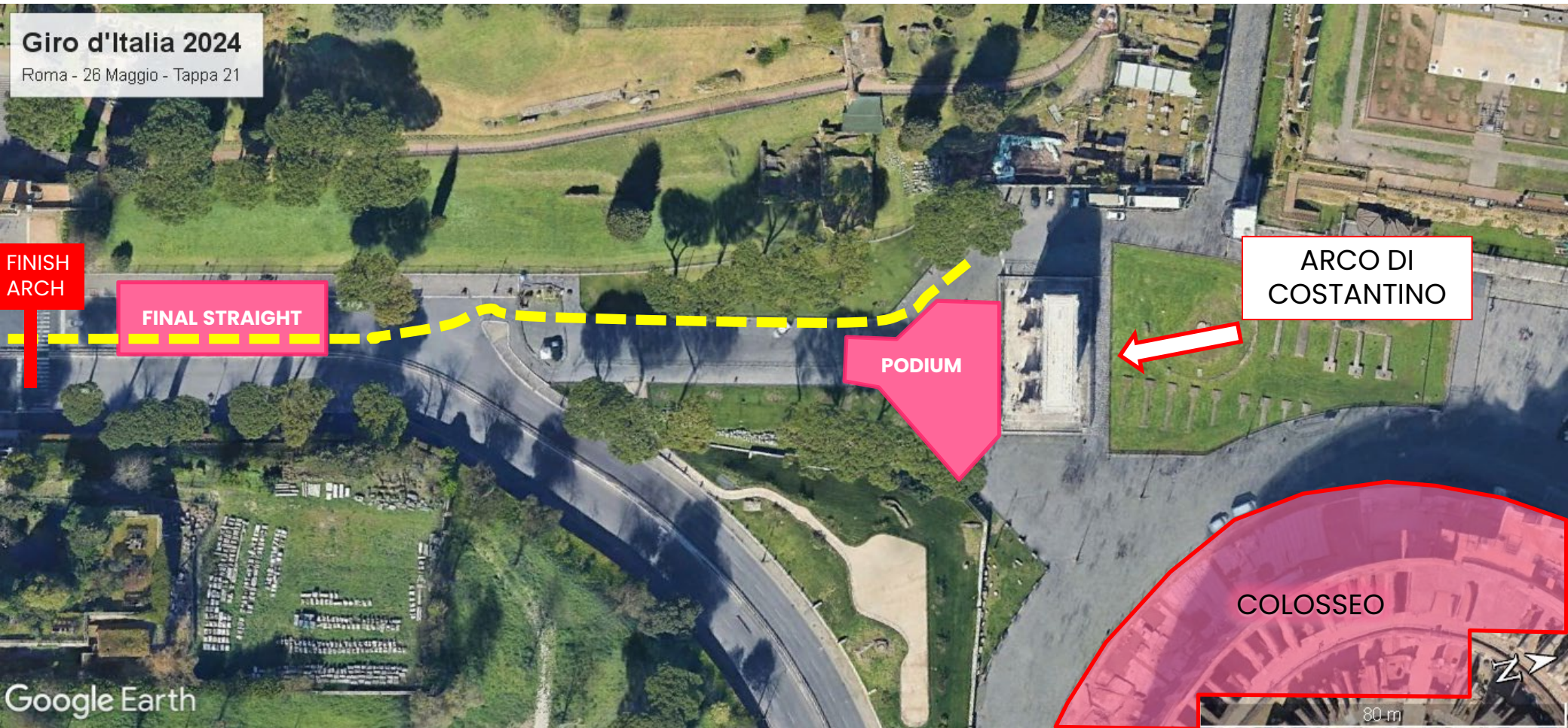
# THE FINAL STRAIGHT

Via San Gregorio – LOUNGE





# PODIUM



# MENÙ PROPOSAL

## Buffet Service

### SALATED BUFFET

Vegan mini milk sandwiches  
Focacceria  
Codfish mantecato and rice wafer  
Tartlet with castelmagno cream and nuts  
Barley salad with crispy bacon and olives  
Cannoncino cacio and pepe  
Mini quiche lorraine

### FIRST COURSES

Maccheroncini with vegetables  
Vegetarian Lasagne

### TRADITION CORNER

Mozzarella, pecorini, soft bread bites, artisan breadsticks

### DESSERT

Apple Cake and Chocolate Cake  
Cannoncini  
Fruit salad

*The menù may be subject to change*



### BAR

Aperol Spritz  
Prosecco di Treviso DOC  
Red & White Wine DOC  
Coca Cola e Coca Cola Zero  
Succhi di frutta  
Acqua Minerale

### CAFFETTERIA

Caffè, hot tea

### BAKERY

Biscuit  
Apple Cake  
Mini Croissanterie



thank you

RCS Sport s.p.A.

Via Rizzoli, 8 20132 Milano, Italia

Email: [giroditalia@rcs.it](mailto:giroditalia@rcs.it)



[GIRODITALIA.IT](http://GIRODITALIA.IT)

La Gazzetta dello Sport  
Tutto il rosa della vita

